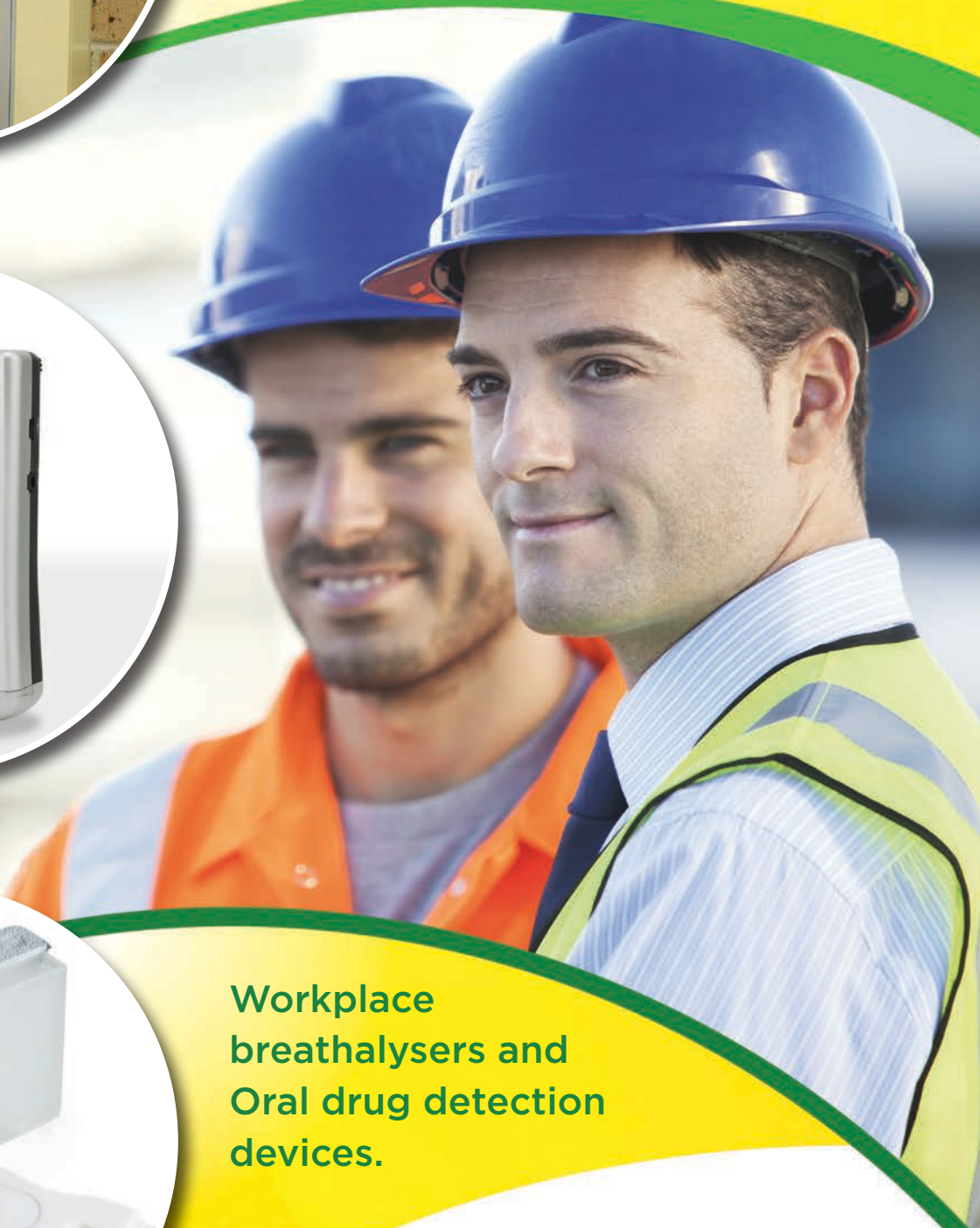


Alcohol and Drug Detection



Workplace
breathalysers and
Oral drug detection
devices.



An Australian owned family company, Australian Dynamic Technologies has made a name for itself as a leader in scientific techniques for breath alcohol analysis. With over 45 years of experience in design and manufacture of Workplace and Wall Mount Breathalysers, we continue to embrace new advances in technology incorporating drug detection and personal breathalysers to our product range.

A commitment to quality and safety are the two driving forces of ADT. Many of the industries that employ our breathalysers and drug detection equipment rely on the performance of our products for the safety of their personnel – a reality we take very seriously.

That means more than simply supplying the right product for the job. It's a matter of knowing our customers, their business needs and providing ongoing service and support.

In an effort to maintain our high standards of quality and the integrity of our business, our philosophy rests on these main principles.

Workplace Breathalyser Alcomaster E3

The Alcomaster E3 is our top of the range portable breathalyser, featuring GPS Satellite Positioning and accompanied with a state of the art Fuel Cell and user interface system.

Outstanding Features Include:

- **GPS Satellite Positioning**
Test location data log
- **State of the art Fuel Cell Technology**
Rapid response and recovery with no warm up period.
- **Rechargeable Lithium-ion battery**
Micro USB cable (supplied)
- **3.5" Color Touch Screen**
Easy to use data entry system.
- **Version available with Integral Thermal Printer**



Wall Mounted Breath Alcohol Analyser

These accurate units are used worldwide with nearly 5000 operational units!

Designed specifically for rugged applications in industry, the BTA series provides simple, expedient and precise breath readings for employees to conform with company regulations. This unit provides fast and accurate throughput allowing workers to be tested at the gate to ensure the highest level of alcohol detection and deterrence.

This unit is the preferred choice of breath testing device for many blue chip companies and Government organisations.

One push button operation with internal test counter, the BTA can be tailored to your industry. Enquire how we can provide the best service and functionality to suit your specific needs.



Workplace Breathalyser Alcomaster P1

The ADT P1 offers professional users precise and quick breath alcohol analysis in a user-friendly and compact form. Because the P1 offers intuitive operation, it's easy to use and precise measurement results can be obtained within a very short period of time.

- **Passive and Direct test modes**
Save on mouthpieces with Passive (Talk Into) test mode.
- **Fuel Cell Sensor**
Highly specific to alcohol, unaffected by other possible breath contaminants.
- **Quick and precise analysis**
This ensures a high specificity to alcohol, with a long and stable working life.
- **Safe and easy to use**
All measurement functions are controlled via a single key, while menu navigation is by three menu keys. Touch screen interface with stylus.
- **Easy to read display**
Alcohol readings are clearly shown on a 2.8 inch LCD display.
- **Memory capacity**
Able to store 6000 test results. This data can be downloaded to a PC.
- **Built-in GPS function**
Can locate the position of testing site.
- **Mouthpieces**
Specifically designed mouthpiece with 360 degree range of use.



Personal Breathalyser KY8300

ADT's most advanced personal breathalyser, the KY-8300 offers users reliable accurate breath alcohol tests in a user-friendly and compact form. The intuitive operation allows precise measurement results to be obtained within a very short period of time.

Advanced Features:

- **Fuel Cell Technology**
Highly specific to alcohol and unaffected by other breath contaminants
- **Simple operation with last test recall**
Useful for tracking rising or falling BAC (blood alcohol concentration)
- **Built-in Li-ion rechargeable battery. Reliable and long-time testing action with Micro USB connection**
You can charge breath tester with your laptop
- **Time, date and total tests conducted all visible on main screen**
- **Compact gas circuit design and advanced analysis process**
Assure fast, accurate and stable testing performance
- **12 monthly calibration suggested with no lock out feature**
- **12 month warranty from date of purchase.**



Additional Services

- Calibration and service of your breathalysers both in-house and on-site.
- Calibration management database that can be set up for automatic reminders.
- Rental breathalysers for workplace, short and long term hire.
- Supply breathalyser accessories, mouthpieces, calibration solution and simulators, hard carry cases.



Oral Drug Testing

ToxWipe

Not all oral fluid testing devices are equal.

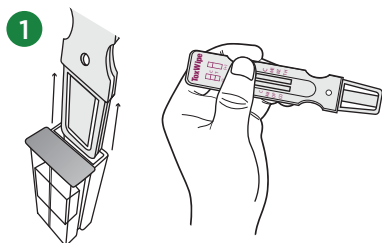
Traditionally urine has been the most common matrix used for workplace drug testing. However, with improvements in test technology during the last decade Australia has seen a significant shift towards oral fluid testing.

With ToxWipe, customers can rest assured that they are using accurate, reliable drug tests with laboratory proven performance. As an added benefit the Toxwipe is one of the fastest oral fluid devices on the market.

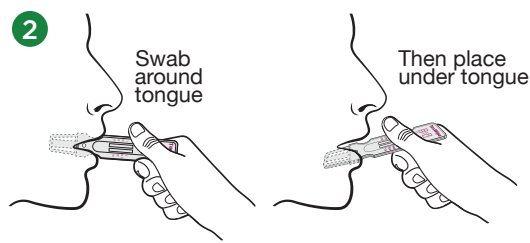
- *Rapid oral drug testing*
- *Accurate - independently verified by AS4760 Laboratory*
- *Ease of collection*



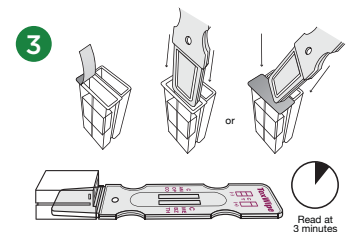
3 Simple Steps



Remove the test device from the sealed foil pouch.



Insert collection pad into mouth, swab around tongue and then place under tongue to aid specimen collection.



Peel the cover off of the sealed cavity of the reagent cap and place the collection pad of the test device all the way in until it clicks. Read the test results between 3-5 minutes.

For further information:

Aust. Dynamic Technologies Co Pty Ltd

5 Aspinall Place, Mulgrave NSW 2756

Tel: +61 2 4577 9347 | Fax: +61 2 4587 7786

Email: sales@austdynatech.com.au

www.breathalyseradt.com.au

australian dynamic technologies